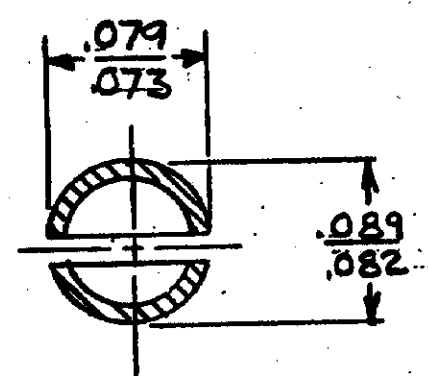
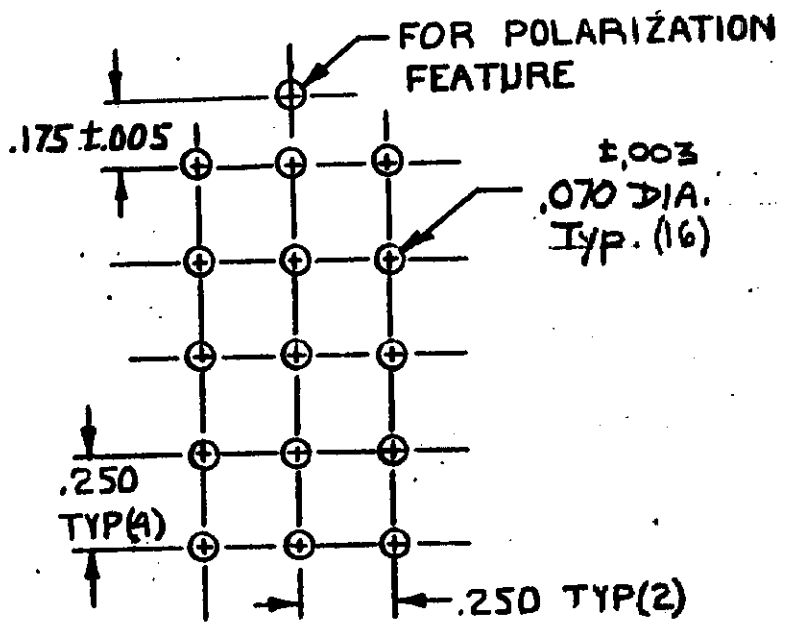
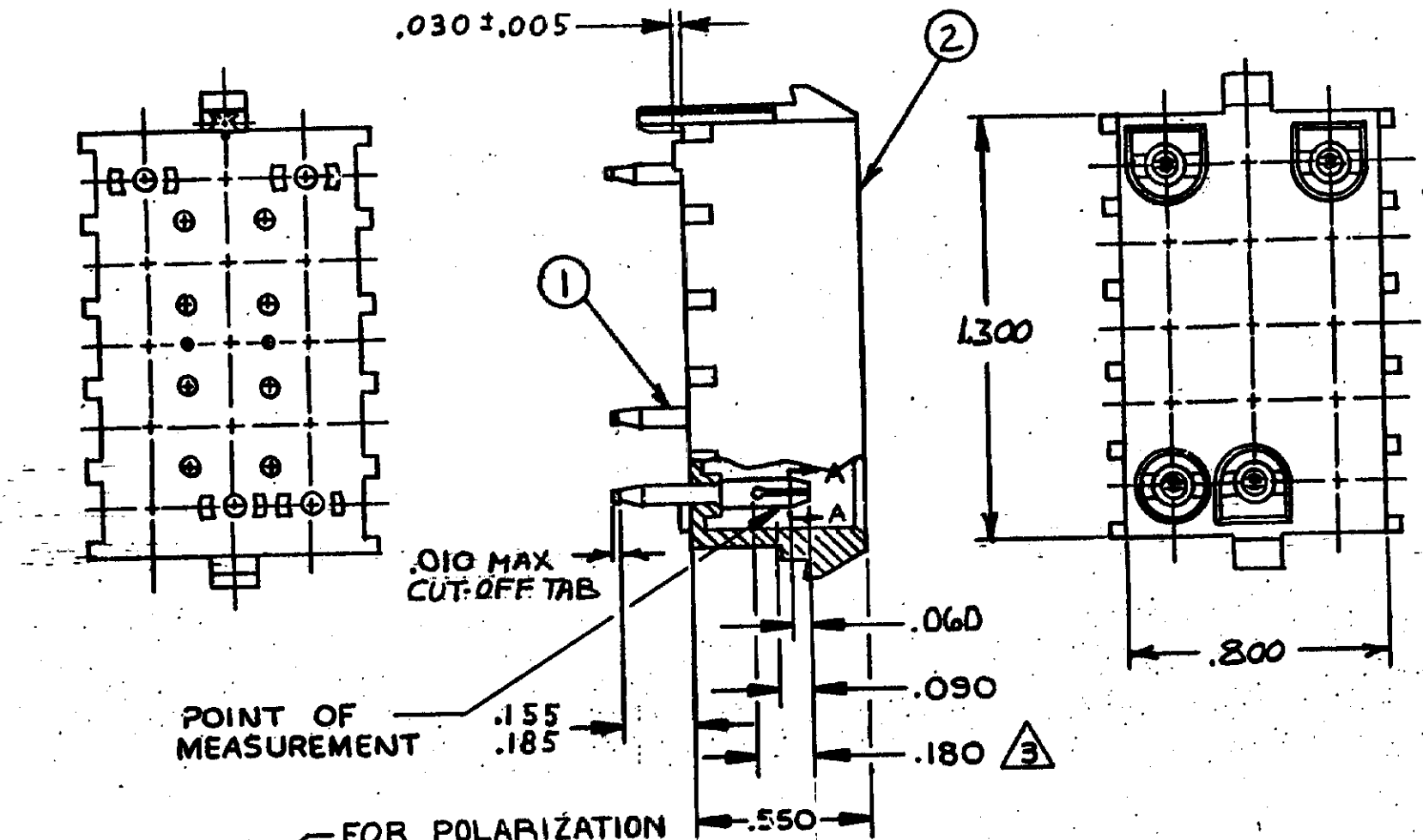


THIS DRAWING IS UNPUBLISHED. RELEASED FOR PUBLICATION 19

© COPYRIGHT 19 BY AMP INCORPORATED, HARRISBURG, PA. ALL INTERNATIONAL RIGHTS RESERVED. AMP PRODUCTS MAY BE COVERED BY U.S. AND FOREIGN PATENTS AND/OR PATENTS PENDING.

| REVISIONS |      |                |                             |         |          |
|-----------|------|----------------|-----------------------------|---------|----------|
| P         | ZONE | LTR            | DESCRIPTION                 | DATE    | APPROVED |
| ✓         |      | 0              | REL NEW DRAWING TTI 81-101  | 1/11/83 | DAS/2H   |
| ✓         |      | A              | REV PER ECN M-7384          | 9/13/83 | TEB / SJ |
| ✓         |      | B              | REV PER ECN AG 214          | 1/26/84 | MC / KS  |
| ✓         |      | B <sub>1</sub> | RESTORATION                 | 6-7-85  | KS / SJ  |
| ✓         |      | C              | ADDED -2 PER TTI CM85-74    | 9-19-85 | CM / RS  |
| ✓         |      | D              | OBSOLETE -2 PER CM-947      | 7-14-87 | PKC TB   |
| ✓         |      | E              | REVISE PER CM-1511          | 2-9-88  | PKC RS   |
| ✓         |      | F              | REVISED PER CM-3328         | 2-20-91 | PKC RS   |
| ✓         |      | G              | REV PER ECN 0730-3928-92    | 1-7-93  | WJG RS   |
| ✓         |      | H              | REVISED PER EC 0730-4181-93 | 7-6-93  | LHS RS   |



SECTION A-A SCALE 10:1

- 1. PARTS COMPLY WITH AMP SOLDERABILITY SPEC. 109-11-3.
- 2. MATES WITH HOUSING No. 480710 USING SOCKET CONTACTS.
- 3. CONTACT IS PLATED OVERALL WITH .000050 NICKEL, THEN .000030 GOLD OVER CONTACT LENGTH INDICATED AND MATTE TIN ON SOLDER TAIL END.

|    |              |                       |                   |          |         |
|----|--------------|-----------------------|-------------------|----------|---------|
| 1  | HOUSING      | NYLON, 94V-2, NATURAL | 2                 | 641975-1 |         |
| 15 | CONTACT      | PHOS BRZ, PRE-TIN     | 1                 |          |         |
|    | Nb. PER ASSY | DESCRIPTION           | MATERIAL & FINISH | ITEM No. | PART NO |

|   |             |                     |  |         |            |
|---|-------------|---------------------|--|---------|------------|
| UNLESS OTHERWISE SPECIFIED DIMENSIONS ARE IN INCHES. TOLERANCES ON: DECIMALS ± .015 ANGLES ± .015 | CONTRACT NO |                     | <b>AMP</b>   AMP INCORPORATED<br>Harrisburg, Pa.                 |         |            |
|   | DR          | 1-11-83             |  |         |            |
|   | CHK         | D.S. Heide 2/14/83  | NAME   |         |            |
|   | APPD        | R. C. Della 2/14/83 | HEADER ASSY, PIN, POLARIZED,<br>UNIVERSAL MATE-N-LOK™ 15 CIRCUIT |         |            |
| MATERIAL  | SEE TABLE   | DSGN APPD           | SIZE   | FSCM NO | DRAWING NO |
| FINISH  | SEE TABLE   | OTHER APPD          | B  | 00779   | 641975     |
|   |             |                     | SCALE  | 2:1     | SHEET      |

RECOMMENDED LAYOUT FOR .062 THICK P.C. BOARD